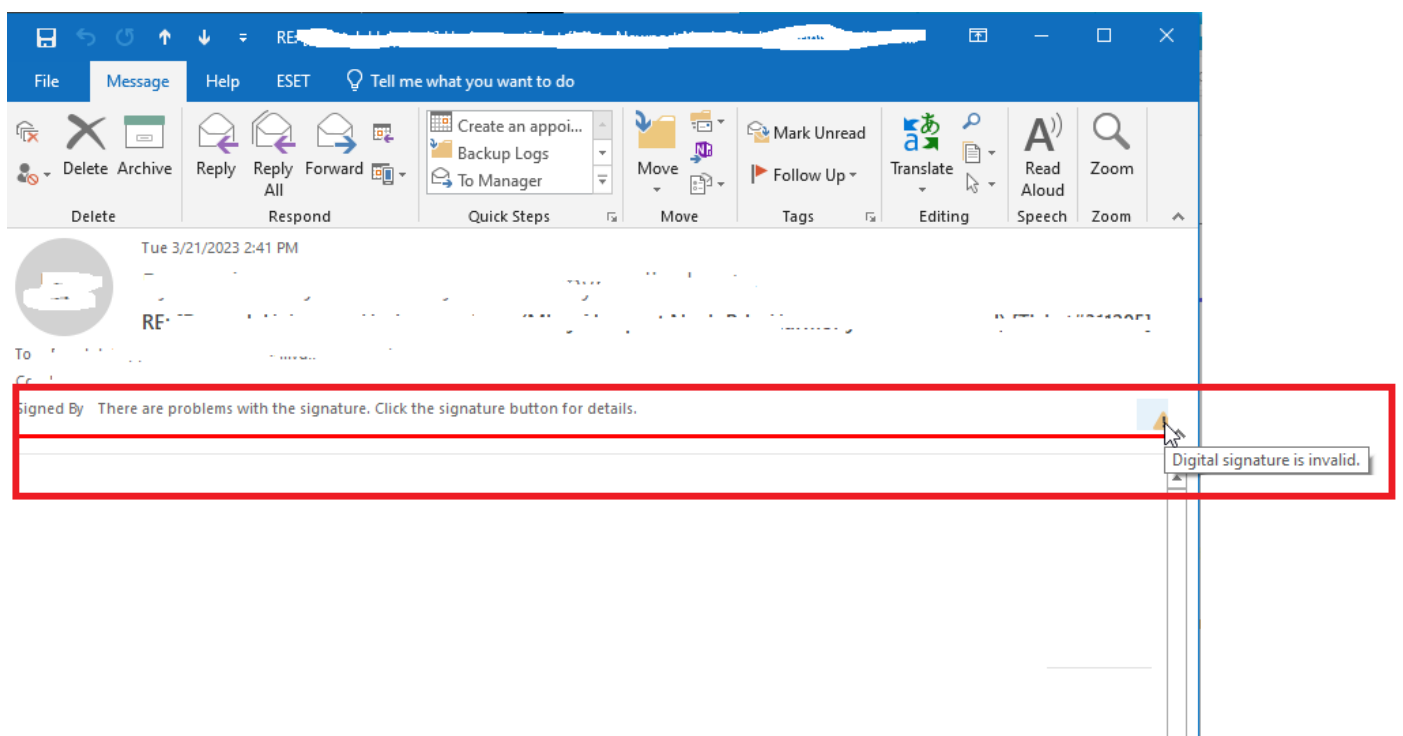


Trust S/MIME Signing Certificates in Outlook

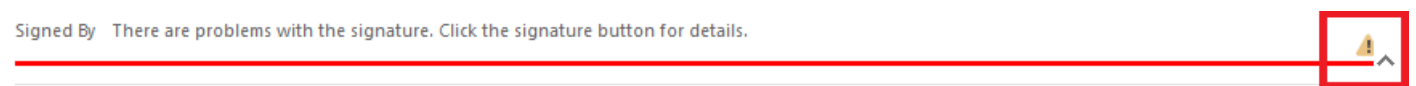
By default Hermes SEG uses self-signed S/MIME certificates for encryption and signing. E-mail clients such as Outlook do not trust those self-signed certificates. In Outlook, emails signed with the self-signed certificates show an invalid digital signature error (**Figure 1**).

Figure 1



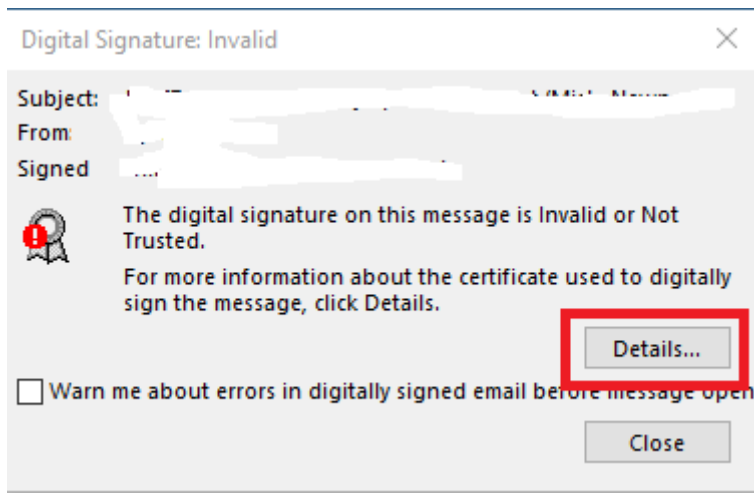
In order to have Outlook trust the certificates, click on the yellow triangle to the right of the e-mail in question (**Figure 2**).

Figure 2



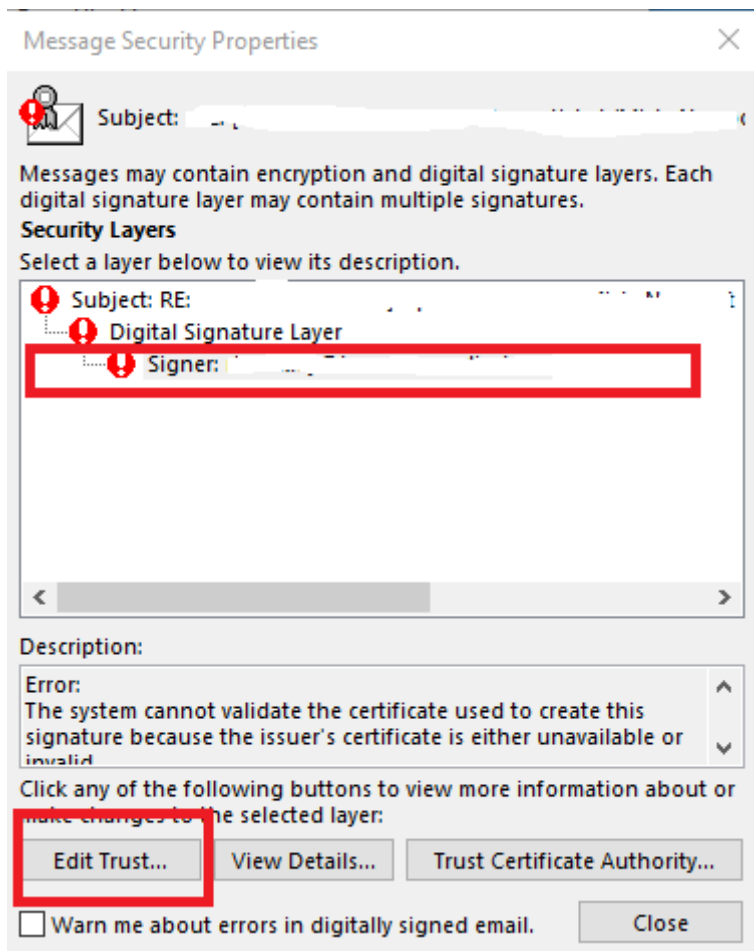
In the resultant **Digital Signature** pop-up window, click on the **Details** button (**Figure 3**).

Figure 3



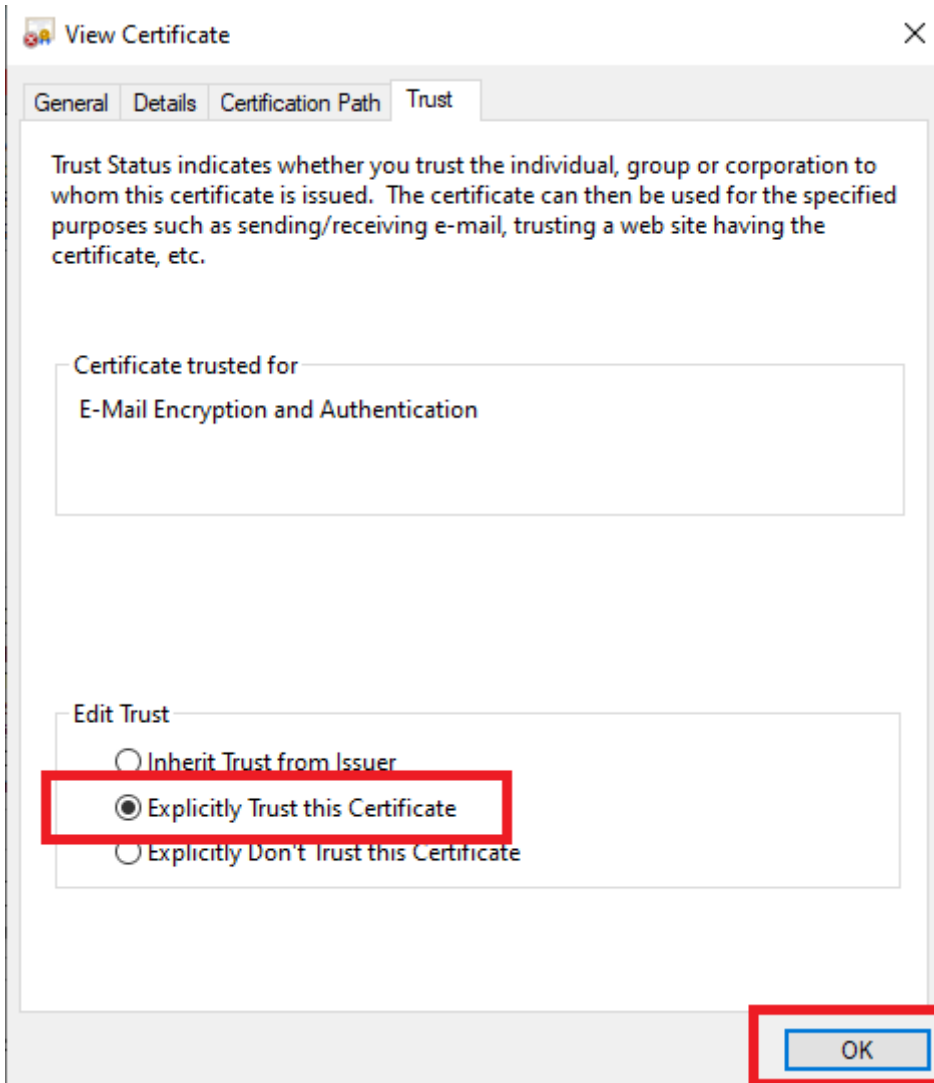
In the resultant **Message Security Properties** pop-up window, click on the Signer e-mail address and then click on the **Edit Trust** button (**Figure 4**).

Figure 4



In the **View Certificate** pop-up window, in the **Trust** tab, under the **Edit Trust** section, select **Explicitly Trust this Certificate** and click **OK** (**Figure 5**).

Figure 5



Close and re-open the e-mail in question and the yellow triangle is now replaced with a red ribbon indicating that the **Digital Signature** is trusted (**Figure 6**).

Figure 6



Revision #1

Created 21 March 2023 19:13:22 by Dino Edwards

Updated 21 March 2023 19:33:53 by Dino Edwards